

ROYAL TREASURE SECURITIES LLC

Trading Platform Activation

Process

交易平台开通流程

-Only For Velox Customer 仅适用于Velox客户

Updated 2025

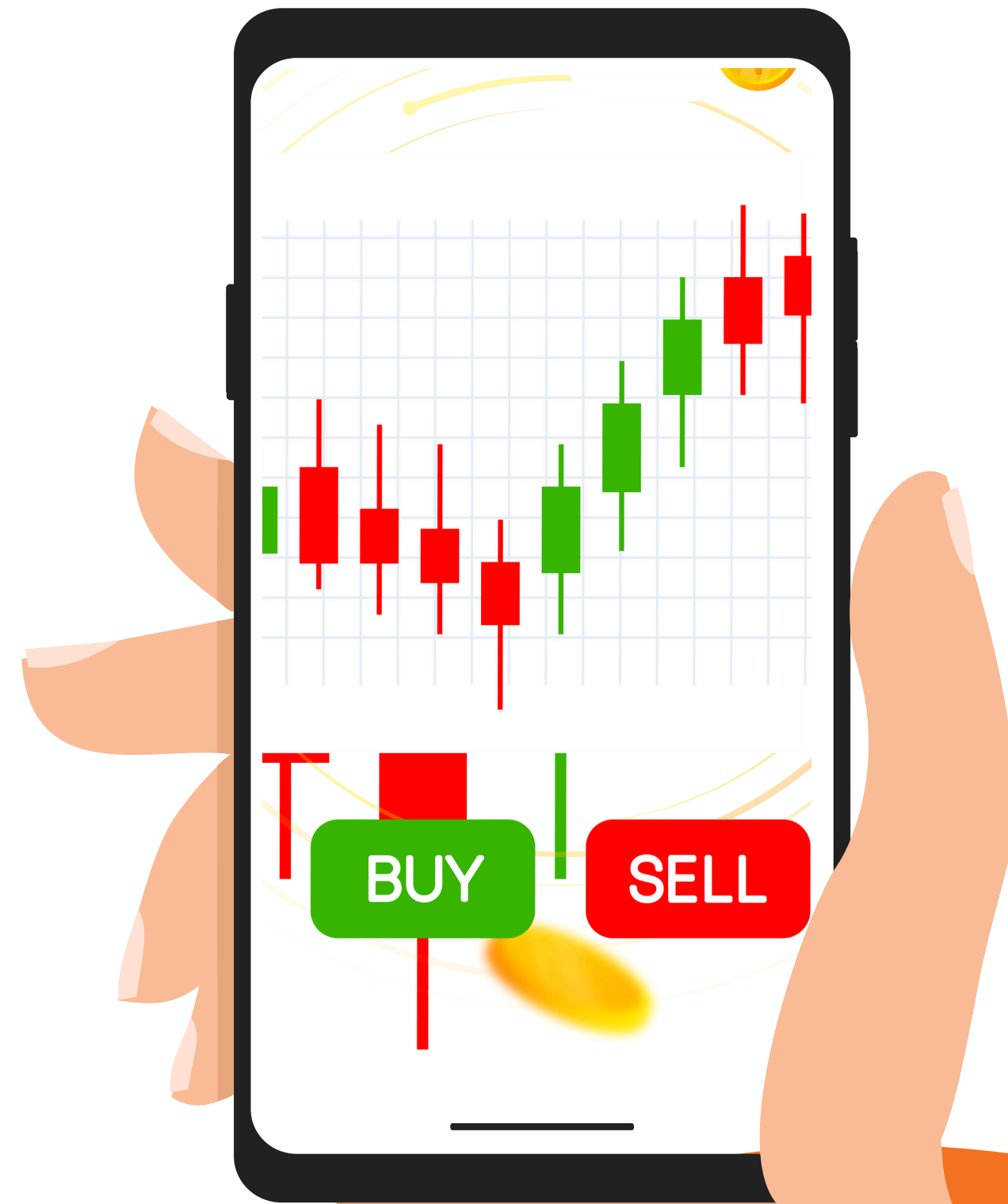
Overview 目录

I. Tradeing Platform Activation Process

交易平台开通流程

II. Trading Platfotm Intro

交易平台介绍



Tradeing Platform Activation Process

交易平台开通流程

STEP 1: OPEN RTS ACCOUNT

步骤一：线上申请皇家证券账户开通

Already have an account? Skip Step 1.
已开通账户？可跳过步骤一。

Go to:

<https://royaltsec.com/open-account/>

访问:

<https://royaltsec.com/open-account/>

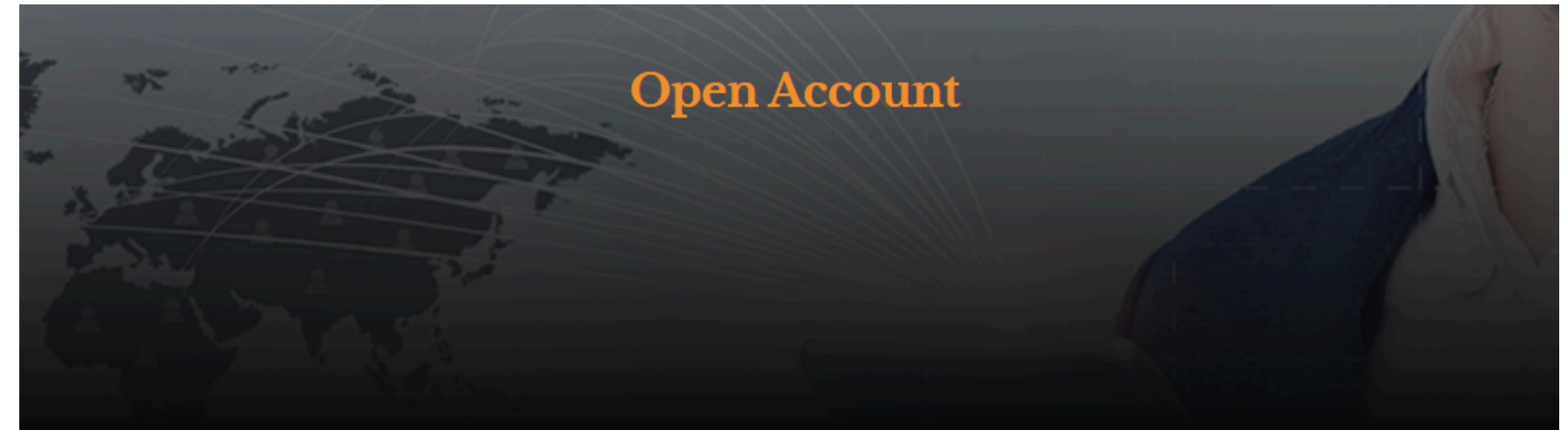
Submit the online application to open a **stock trading brokerage account.**

在线提交申请，开立**股票交易经纪账户**。

Online Application Portal
网页注册申请入口

INDIVIDUAL ACCOUNT APPLICATION FORM
个人账户申请

BUSINESS ACCOUNT APPLICATION FORM
公司/企业账户申请



Understand the online application. 关于线上申请

- If you don't complete this application in one session, you can click 'Finish Later' and return to complete it at your convenience.
如果您未能一次性完成线上申请填写，您可以点击申请表底的 'Finish Later' 并在有空的时候再回来继续填写。

After submitting your application. 在递交线上申请后

- You will receive an email to upload supporting documents and e-sign the application.
您将收到一封电邮供您审阅填写的文件、签署并上传其他开户所需文件。
- You will then receive an email to launch the CIP screening.
在签署完成后，您将收到另一封电邮，需要您完成KYC认证。
- After all validations are complete, you will receive an account welcome letter along with your login credentials.
在以上两步都完成并通过审核后，您将收到欢迎邮件，邮件中会带有您登录账户所需的信息。

Tradeing Platform Activation Process 交易平台开通流程

STEP 1: OPEN RTS ACCOUNT 步骤一：线上申请皇家证券账户开通

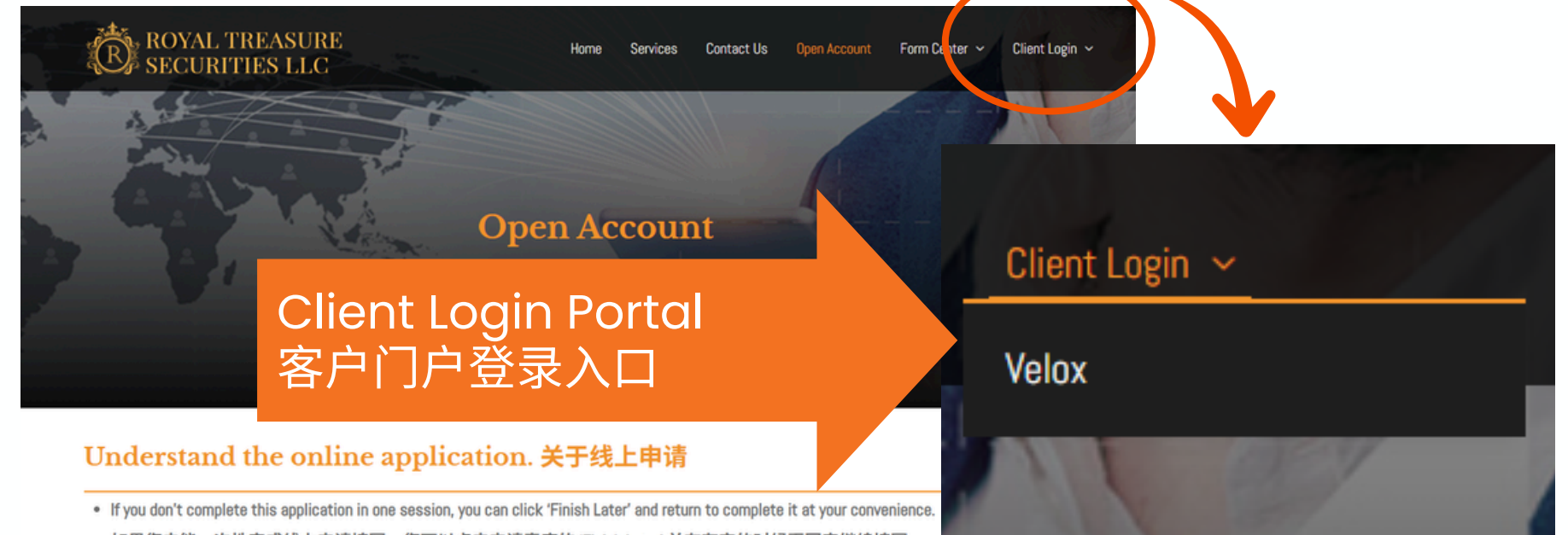
Already have an account? Skip Step 1.
已开通账户？可跳过步骤一。

After approval, you'll receive **client portal login credentials** (username/password).

审批通过后，您将收到**客户门户登录信息**（用户名/密码）。

Keep these credentials safe; you'll use them in later steps.

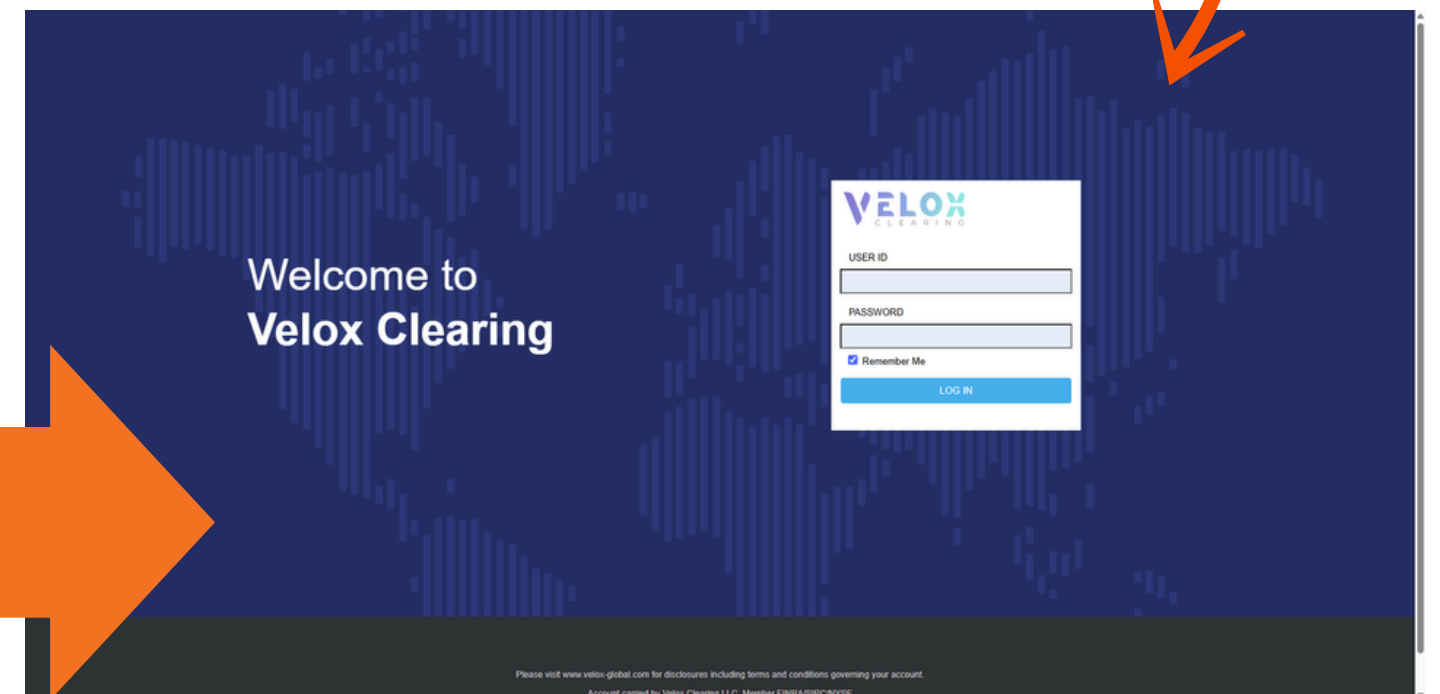
请妥善保管登录信息，后续步骤将用到。



After submitting your application. 在递交线上申请后

- You will receive an email to upload supporting documents and e-sign the application.
您将收到一封电邮供您审阅填写的文件、签署并上传其他开户所需文件。
- You will then receive an email to launch the CIP screening.
在签署完成后，您将收到另一封电邮，需要您完成KYC认证。

Velo Login Page
Velox登录页面



Tradeing Platform Activation Process

交易平台开通流程

STEP 2: Request to Enable the Self-Directed Trading System

步骤二：申请开通自主交易系统权限

Email help@royaltsec.com requesting Self-Directed Trading to be enabled

向help@royaltsec.com发送邮件，申请开通自主交易系统。

You will receive **trading system login credentials**.

您将收到交易系统的登录信息。

On first login, **review and e-sign the Market Data Agreement** as prompted.

首次登录时，按页面提示查看并签署市场数据协议 (Market Data Agreement)。

On your **first login**, please **change your password immediately** to ensure account security.

首次登录后，请立即修改密码以确保账户安全。

Trading Platform Activation Process

交易平台开通流程

Notes & Tips

说明与贴士

- **“Client portal login” (Step 1)** and **“trading system login” (Step 2)** are **different**—keep both.
客户门户登录（步骤一）与交易系统登录（步骤二）并非同一账号，请分别妥善保存。
- **The Client System** is used to view **balances, request transfers, and download documents** (monthly statements, tax forms, trade confirmations, etc.)
客户系统用于查看余额、申请转账和文件下载（月结单、税表、交易确认等）
- **The Trading System** is used for **online trading**.
交易系统用于线上交易
- Always use the [official links](#) and the help@royaltsec.com address provided above.
请始终使用上述[官方网站](#)与[官方邮箱](#)进行操作与沟通。

Trading Platform Intro

交易平台介绍

The screenshot displays a trading platform interface for Royal Treasure Securities LLC. The interface is divided into several sections:

- POSITION:** A table showing current positions in the account.
- ACCOUNT:** A section for account buying powers and open orders during intraday.
- WATCH LIST:** A customizable stock watchlist.
- ORDER STATUS:** A table for order status.
- GET QUOTE & DAY CHART:** A section for finding stock prices and intraday changes.
- TIME & SALES:** A section for market transactions during the current trading day.

Annotations in Chinese provide explanations for these sections:

- 您现在持有的仓位**
Current Positions in the account
- 您的融资购买力 (如适用), 您的现金购买力, 是否有发出未交易的订单**
Account buying powers and open orders during intraday
- 查找单一股票价格, 市场当天出价, 要价状态。 Price, volume and intraday changes of the stock you are searching**
- 您可以在此处定制您的股票观察名单, 以便跟踪您想交易股票的价格**
Customizable Stock watchlist
- 单一股票价格, 市场当天中出现的买卖量及价格**
Market transaction during the current trading day

Symbol	Qty	Avg Price	Unrealized
ABLV	10	1.1200	5.6
CHSN	10	2.2000	-9
FLOT	100	50.9000	12
I2M	10	2.0700	0.6
MLGO	20	8.3500	-158.37
PULS	10	49.7200	0.2
SWIN	10	4.0900	-13.1
XTKG	20	0.0	-6.54
Total Position Value			

Account Balance
Current Buying Power
Current Overnight Buying Power
Open Equity
Current Order Hold Buying Power

Symbol	Last	Chg	Chg %
--------	------	-----	-------

Action	Qty	Symbol	Open	Order Type	Price	Dur
--------	-----	--------	------	------------	-------	-----

Symbol	Find
0.00	0.00(0.00%)
Bid	Ask
Bid Size	Ask Size
Volume	Open
Day	Prev Close
52 Week	Market

Time	Symbol	Size	Price
------	--------	------	-------

Equity: \$100,000.00 Current BP: \$100,000.00 Unrealized: -165.21 DOW 41342.93 251.51 (0.61%) S & P 5630.00 37.82 (0.68%) NASDAQ 17547.23 -8.80 (-0.05%) Connected

Trading Platform Intro - Trading Tab

交易平台介绍 - 交易栏

输入您交易的股票代码
Enter stock symbol

交易数量
Enter quantity of stock

输入您的订单类型
Enter order type

对于限价单、止损限价单、跟踪止损单及区间单，请在此输入您的目标价格。
For Limit, Stop Limit, Trailing Stop, and Range, enter your price target here

订单有效时间
Open order duration

自选股名单
Watchlist

股票数据筛选工具
scanner

订单现况
Order status

现有仓位
Current holding position

股票图表
Stock Charts

股票相关新闻
News

ACCOUNT TRADING TR00011

STOCK-ETFs OPTIONS OPTION CHAIN TRADING SETTINGS

Symbol Quantity Order Type Limit Price Duration Route

Buy Sell Short

Bid Ask Last Market

ORDER STATUS POSITION WATCHLIST CHART SCANNER MARKET DEPTH NEWS TWITTER SHORT LOCATE ORDER STATUS

Action	Qty	Symbol	Open	Order Type	Price	Dur	Route	Time	Order ID	Memo
--------	-----	--------	------	------------	-------	-----	-------	------	----------	------

All



**Everything is ready! you can now start trading
in the stock market.**

一切已准备就绪！您现在可以开始进行股票交易了。

CONTACT US



www.royaltsec.com



help@royaltsec.com



646-751-8957



40 Wall Street, Suite 21-05,
New York, NY 10005